

Camere

[Home](#)

[... sui Tetti](#)

[... sul Campanile](#)

[Booking](#)

[Prices](#)

[Contacts](#)

Foto Cucina +



Da scorrere e sotto singole piccole

Just a short walk from Montalcino's municipal tower and medieval fortress, you can find L'Affaccio, the comfortable and elegant B&B, owned by Azienda Agricola Martoccia.

L'Affaccio's apartments are located on Piazza Garibaldi, one of the two main squares of the town, renowned by the Montalcinesi Piazza Padella (cooking pan) for its very distinctive shape. The square is visible in all its beauty from one of the B & B's faces. On the other side, the view opens onto the unmistakable of Vald'Orcia hills



Camere

[Home](#)

[... sui Tetti](#)

[... sul Campanile](#)

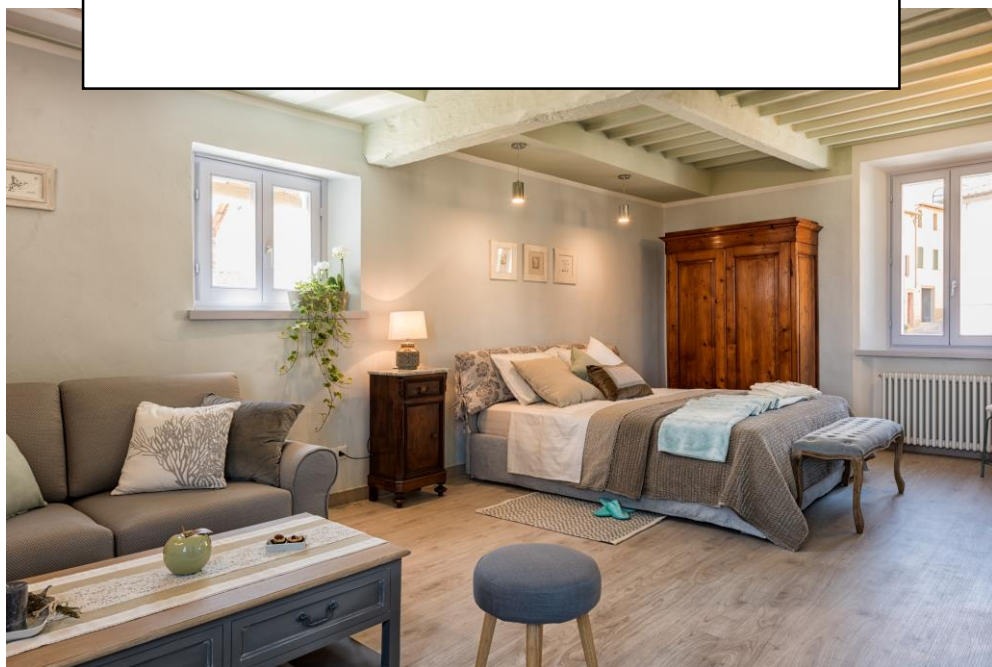
[Prenota](#)

[Tariffe](#)

[Contatti](#)

The Affaccio consists of two spacious and elegant rooms, both with private bathroom, air conditioning and TV. The apartments have a double bed and a sofa that can be turned into a comfortable bed.

... sui Tetti
...OVER THE ROOFS



... sul Campanile
... OVER THE BELL TOWER





B&B L'Affaccio



Camere

Home

... sui Tetti

... sul Campanile

Prenota

Tariffe

Contatti

....sui Tetti
...over the roofs

IMMAGINI

Da scorrere e sotto singole piccole

A large and bright room overlooking not just the Piazza and Via Matteotti but also the roofs of the city, offering an unexpected glimpse of Montalcino. Here you can enjoy a relaxed environment and a warm and welcoming decor, with soft, relaxing colors. The room is equipped with a modern private bathroom. The comfortable sofa can accommodate for a pleasant reading or for a great glass of wine

Services

Air conditionning

Wi-fi

Tv

No animals

No smoking



Camere

Home

... sui Tetti

... sul Campanile

Prenota

Tariffe

Contatti

... sul Campanile

... over the bell tower

IMMAGINI

Da scorrere e sotto singole piccole

... sul Campanile

The two windows of the room give wide light to the environment, characterized by clear and reassuring colors. Two comfortable steps lead to the bathroom. Comfort and elegance also distinguish this apartment, where you can enjoy a magnificent view of both the Val d'Orcia and the historical buildings of Montalcino.

Services

Air conditioning

Wi-fi

Tv

No animals

No smoking

Booking

Form richiesta disponibilità

To confirm your reservation you will need to pay an advance of 30% on the total of your stay through a bank transfer to

L'Affaccio srl

Banca di Credito Cooperativo Chianciano Terme - Sovicille

agenzia di Montalcino

Viale Pietro Strozzi, 43

53024 Montalcino Siena

Tel +39 0577 849494

IBAN IT 75G088852550000000071866

ABI 0885 CAB 25500

BIC/ SWIFT : ICRAITRROLO

Prices

Prices per day for room with breakfast

... sui Tetti € 240,00

... sul Campanile € 240,00

Check- in from 2 pm to 4 pm

Check- out from 9 am to 11 pm

Prices also include:

Air Conditionig- TV- Hair dryer- Courtesy set- Internet



B&B L'Affaccio



Camere

[Home](#)

[... Sui Tetti](#)

[... Sulla Torre](#)

[Prenota](#)

[Tariffe](#)

[Contatti](#)

Contacts

L'Affaccio srl
Piazza Garibaldi 19
53024 Montalcino-SI
Tel: XXXXXXXXXXXX
Email:
beb@affaccio.com

Contat us

Email

object

message

[Mappa di google](#)